



Julie Billiard
Schools



2023-2024 Enrollment Guide

BEYOND EDUCATION. BEYOND EXPECTATIONS.

Who JB Serves

The beauty of JB is that there is no "typical" student. While we take an individualized approach to educating our diverse student body, we do not have the services in place to support every child with special learning needs. This guide outlines general factors that commonly lead to success in our environment. However, every child is unique and we evaluate our setting's ability to benefit each child who applies.

Learning & Social Differences

JB best serves children with mild to moderate autism, dyslexia, dyscalculia, dysgraphia, ADD/ADHD, expressive language delays, receptive language delays, written expression difficulties, anxiety disorders, and executive function deficits. All JB students have an Individualized Education Plan (IEP) and qualify for state scholarship funding. Our setting is not structured for children who need more intensive social, academic, and/or behavioral support.

Expressive & Receptive Language

JB students, even at the Kindergarten level, are expected to verbally communicate their wants and needs. As children grow through our program, we continue to work on expressive, receptive, and pragmatic language. We also offer onsite speech therapy in small group settings.

Independence

Our setting is intentionally designed to offer small ratios and direct intervention while still creating a sense of independent learning. Students who require a 1:1 aide or paraprofessional may not be ready for our environment, as our students are expected to independently attend, demonstrate expected behaviors, and complete classwork and homework.

Age & Development

Children must be 5 years old by August 1st to enroll in Kindergarten. JB serves students in grades Kindergarten - Eight. Students should be able to safely navigate the school, use the restroom independently, and keep themselves and others safe.

Academics

In terms of academic development, our ultimate goal is to prepare our students to move on to a more typical high school environment and beyond. Our grade bands allow us to provide some flexibility for students who need higher or lower academic support, but as a general rule we are best able to support children who are learning within 1-2 grades levels of their age-appropriate grade. Every child is different and exceptions do apply. While we do have some twice exceptional and gifted learners, we do not have a gifted program or enrichment. We believe that learning should be customized, challenging, and fun.

Behavioral Needs

Our certified Intervention Specialists and onsite Board Certified Behavior Analysts are accustomed to a variety of behaviors that students bring to JB. We understand and have empathy for students who use the functions of behaviors to avoid or distract from situations in which they feel like they can't succeed. In many cases, when children are in an environment like JB, these behaviors become less frequent. However, we can't adequately serve students whose behavior physically or emotionally threatens the learning process, or the safety of our students, faculty and staff. Our program is not designed to serve students with persistent or severe behavior problems.

Trust & Team Approach

Perhaps the greatest indicator of student success at Julie Billiard Schools is the mutual trust and respect we establish with parents and guardians. We ask for your full buy-in, communication, and support as we navigate your child's education together.

Admissions Journey

2023 - 2024 and 2024 - 2025 applications are being accepted



1

Explore our schools. Attend an Admissions Information Session, visit our website, and speak with our Admissions Team to learn more about how JB could benefit your child. We are here to help with every step of the journey!

2

Submit an admissions application online. Families can apply at any point during the school year at juliebilliardschools.org/apply. As soon as your application is submitted in full, we will review it and will schedule a brief Application Review Call.

3

Attend a Screening Activity. During the Application Review Call, we will invite your child to an upcoming Screening Activity. Screenings take place multiple times throughout the school year and are held at one of our network of campuses.

4

Receive determination. If, after the Screening Activity, we determine that we have the services in place to support your child (and there is a current opening), we will reach out with next steps. If there is not an immediate opening, we will add your child to our waitlist.

5

Apply for scholarship and financial aid. Once notified of acceptance, families should apply for either the Jon Peterson Scholarship or Autism Scholarship. At this point, Jon Peterson recipients can also apply for need-based financial aid.

6

Join the JB Family. Once the scholarship application and other enrollment paperwork is completed, an Orientation Meeting will be scheduled with your school principal prior to the child's start date.

QUESTIONS

Contact Julie Billiard Schools' Admissions Office at 216-716-8318 or email admissions@jbschool.org.

Applying to Julie Billiard Schools

juliebilliardschools.org/apply



Applying for admission is easy using our online application. At this time, the application fee is waived. We evaluate applications in the order in which they are received. If you have any interest in Julie Billiard Schools, we highly encourage you to take 10-15 minutes to complete an application, even if we are currently at capacity in your grade level of interest at your campus of choice.

Along with the completed online application form, the following items will be required during the application process. **If you do not have these items, or if your IEP or ETR are out of date, please reach out to us.** Upload both the IEP and ETR in their entirety. If you do not have a copy of the requested special education documents, your public school district will be able to provide them to you.

- Current Individualized Education Plan (IEP)
 - *Students currently attending private school should upload their Service Plan in place of an IEP*
- Current Evaluation Team Report (ETR)
- Child's Birth Certificate
- Kindergarten Readiness Checklist (if applying for Kindergarten)
- Student Photo

When your application is submitted in full, we will review it and will schedule an Application Review Call. During that call, we will schedule a Screening Activity for your child. Screenings take place multiple times throughout the year. They last less than two hours and allow us to meet your child and evaluate whether our setting is appropriate for him or her. You can find more information about Screenings on page 5.

We will be in touch within one week of the Screening Activity to determine next steps. If a spot is not immediately available, we will add your child to our waitlist.

QUESTIONS

Contact Julie Billiard Schools' Admissions Office at 216-716-8318 or email admissions@jbschool.org.

Admissions Timeline 2023-2024

Julie Billiard Schools offers rolling admissions, meaning that families can apply at any point during the year. We offer multiple Screening Activities and start dates to help families plan in advance. *Dates are subject to change due to staffing, inclement weather, etc.*

Application Dates for Students in Grades 1-8, or mid-year KG applicants

Apply By	Screening Date	Financial Aid/ Scholarship Due to JB	Orientation Meeting	Start Date
Fri, Aug. 25, 2023	Sat, Sep. 9, 2023	Mon, Sep. 18, 2023	Week of Sep. 18	Week of Sep. 25
Fri, Sep. 22, 2023	Sat, Oct. 7, 2023	Mon, Oct. 16, 2023	Week of Oct. 16	Week of Oct. 24
Fri, Oct. 20, 2023	Sat, Nov. 4, 2023	Mon, Nov. 13, 2023	Week of Nov. 13	Week of Nov. 28
Fri, Nov. 17, 2023	Sat, Dec. 2, 2023	Mon, Dec. 11, 2023	Week of Dec. 11	Week of Jan. 16
Fri, Jan. 19, 2024	Sat, Feb. 3, 2024	Mon, Feb. 12, 2024	Week of Feb. 12	Week of Feb. 20
Fri, Feb. 16, 2024	Sat, Mar. 2, 2024	Mon, Mar. 11, 2024	Week of Mar. 11	Week of Mar. 19
Fri, Mar. 29, 2024	Sat, Apr. 13, 2024	Mon, Apr. 22, 2024	Week of Apr. 22	Aug. 2024
Fri, Apr. 26, 2024	Sat, May 11, 2024	Mon, May 27, 2024	Jun. 2024	Aug. 2024
Fri, Jul. 19, 2024	Fri, Aug. 2, 2024	Fri, Aug. 9, 2024	Aug. 2024	Aug. 2024

Application Dates for Students Applying to 24-25 Kindergarten

Apply By	Screening Date	Financial Aid/ Scholarship Due to JB	Orientation Meeting	Start Date
Fri, Mar. 1, 2024	Wed, Mar. 13 & Thur, Mar. 14, 2024	Mon, Apr. 22, 2024	Week of Jun. 2024	Aug. 2024

Applications for admission will open one year in advance - typically in June. Applications for the 2023 - 2024 and 2024 - 2025 academic years are available online now. This summer, the application for the 2025 - 2026 academic year will launch.
www.juliebilliardschools.org

QUESTIONS

Contact Julie Billiard Schools' Admissions Office at 216-716-8318 or email admissions@jbschool.org.

About the Screening Process

We hold Screening Activities for students in grades 1-8 multiple times each year. Group screenings allow us to observe how students interact in a true class-like setting. See page 4 for Screening Activity dates and timelines. Reach out to admissions@jbschool.org with any questions.

What happens at a Screening Activity?

Our highly qualified Screen Team, composed of Intervention Specialists, Occupational Therapists, Speech Therapists, Behavior Analysts, and Administrators, work together to engage your child in a warm, friendly school setting. Screening is held in small groups of students to model our class setting. Screening is a part of the holistic assessment we use to determine if our schools have the services in place to support your child.

We explore your child's academic abilities, needs, and potential through developmentally-appropriate tasks and assessments. The most important part of our Screening is the social and emotional component, as we want to ensure that Julie Billiard Schools have the appropriate supports in place to help your child thrive. We do not expect perfection and understand that students come to JB with a wide range of academic and social skills.

A typical Screening Activity includes a brief meeting in which students are encouraged to introduce themselves, followed by a social activity. We facilitate a writing and reading activity, followed by a mini recess or structured game, then a math activity. We observe students' fine motor skills, problem-solving abilities, coping strategies, self-advocacy, work stamina, and work ethic. We also love to see how they interact with their peers, answer questions, and follow directions.

What happens after a Screening Activity?

Our team collaborates to discuss the best way Julie Billiard Schools could serve your child. We complete an assessment form based on the levels of support needed and determine if we could serve your child in the future. Parents can expect a determination, via phone call and email, within a week of the Screening Activity. Please note that an invitation to the Screening Activity does not guarantee an immediate placement at one of our schools. If we determine at a Screening that we can support your child in one of our schools, he or she will be placed on our waitlist if there are no immediate openings.

If we do have an immediate opening in your desired grade level, we will work quickly to enroll your child. Parents will be alerted about openings and waitlist status in the post-screening call. Our Admissions Team will contact you to set up an Orientation Meeting. If we determine that we don't have the services in place to support your child's needs, we will provide additional resources.

QUESTIONS

Contact Julie Billiard Schools' Admissions Office at 216-716-8318 or email admissions@jbschool.org.

Available Scholarships & Financial Aid



Julie Billiard Schools keeps tuition and fees as low as possible to make our award-winning education feasible for families of all backgrounds. Every family at Julie Billiard Schools receives some form of financial support in the form of scholarships or financial aid. More than \$1 Million in financial aid was awarded to 26 percent of the student body in the 2022-23 school year. 100 percent of our families receive support from Ohio Department of Education (ODE) scholarships.

2023-2024 Tuition: \$32,445 + \$100 Academic Fee

2024-2025 Tuition: \$35,340 + \$100 Academic Fee

Tuition includes our award-winning educational program, all in-house speech, occupational, music, and art therapies, as well as supplies and technology. Year after year, our families see the incredible value of our program as their children grow and thrive.

All students who have an Individualized Education Plan (IEP) in the state of Ohio qualify for one of two scholarships. Families should reference their Evaluation Team Report (ETR) to find the qualifying disability listed. If the disability category listed in section four is Autism, that child will qualify for the Autism Scholarship. If the disability listed is anything other than Autism, that child will qualify for the Jon Peterson Scholarship.

All families accessing the Autism and Jon Peterson Scholarships may apply, and be considered, for additional financial aid from Julie Billiard Schools. Financial aid is need-based and available on a first-come basis. Financial aid is made available thanks to the generosity of our donors.

When to Apply

Families can apply for financial aid after being accepted to Julie Billiard Schools

QUESTIONS

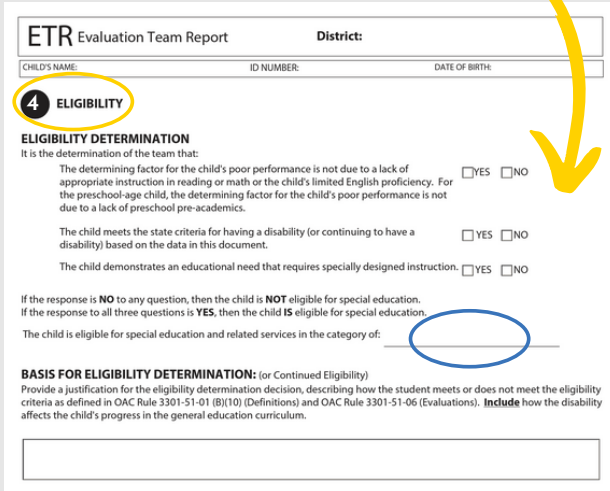
Contact Julie Billiard Schools' Admissions Office at 216-716-8318 or email admissions@jbschool.org.

Navigating Scholarships and Financial Aid



1 Review your ETR

Check your child's Evaluation Team Report (ETR)



ETR Evaluation Team Report District: _____

CHILD'S NAME: _____ ID NUMBER: _____ DATE OF BIRTH: _____

4 ELIGIBILITY

ELIGIBILITY DETERMINATION
It is the determination of the team that:

The determining factor for the child's poor performance is not due to a lack of appropriate instruction in reading or math or the child's limited English proficiency. For the preschool-age child, the determining factor for the child's poor performance is not due to a lack of preschool pre-academics. ☐ YES ☐ NO

The child meets the state criteria for having a disability (or continuing to have a disability) based on the data in this document. ☐ YES ☐ NO

The child demonstrates an educational need that requires specially designed instruction. ☐ YES ☐ NO

If the response is **NO** to any question, then the child is **NOT** eligible for special education.
If the response to all three questions is **YES**, then the child **IS** eligible for special education.

The child is eligible for special education and related services in the category of: _____

BASIS FOR ELIGIBILITY DETERMINATION: (or Continued Eligibility)
Provide a justification for the eligibility determination decision, describing how the student meets or does not meet the eligibility criteria as defined in OAC Rule 3301-51-01 (B)(10) (Definitions) and OAC Rule 3301-51-06 (Evaluations). **Include** how the disability affects the child's progress in the general education curriculum.

Start with your child's Evaluation Team Report (ETR). In order to access a state scholarship, your child's ETR must be **1) From Ohio 2) Current.** ETRs expire every three years. Check the date on the first page of the ETR. **3) From the School District in which your child ATTENDS school.**

Go to Section 4 of the ETR. This is usually toward the end of the document and appears immediately before the signatures page.

Find the section that determines eligibility (circled in blue on the image to the left).

Important note: If your child has an IEP, he or she also has an ETR. If you do not have a copy of your child's current ETR, reach out to your school district to request one.

2 Identify Category for Scholarship

Access the Appropriate Scholarship

- Autism
- Emotional Disturbance
- Hearing Impairment
- Vision Impairment
- Hearing and Vision Impaired
- Intellectual Disability
- Multiple Disability/Multi-handicapped
- Orthopedic Impairment
- Other Health Impairment (OHI-Minor)
- Other Health Impairment (OHI-Major)
- Specific Learning Disability
- Speech or Language Impairment
- Traumatic Brain Injury
- Developmental Delay

There are 14 Categories of Disability that could be listed on your child's ETR.

If the category listed is Autism: Your child will use the Autism Scholarship.

If the category listed is ANYTHING OTHER than Autism Your child will use the Jon Peterson Scholarship.

Important note: Even if your child has multiple diagnoses and disabilities, only one category can be listed on the ETR. The category listed allows you to access the appropriate scholarship. If you disagree with the category, reach out to your school district for next steps.



Navigating Scholarships and Financial Aid, Cont.



3

Applying for Scholarship

JB will send you the appropriate scholarship application based on your category.

Autism

Once accepted into Julie Billiard Schools, apply for the Ohio Autism Scholarship. The application is a 2-page fillable PDF that you should complete and return ASAP via email to admissions@jbschool.org.

JB will then submit the form, with your child's Birth Certificate, proof of residence, ETR, and IEP, to the Ohio Department of Education.

Once the Scholarship is accepted by ODE, you will receive a mailed acceptance letter to sign and return. If you have any questions about how to complete that form, please reach out. Once completed, send a copy to JB at admissions@jbschool.org.

Categories other than Autism

Once accepted into Julie Billiard Schools, apply for the Jon Peterson Scholarship. The application is a 2-page fillable PDF that you should complete and return ASAP via email to admissions@jbschool.org.

JB will then submit the form, with your child's Birth Certificate, proof of residence, ETR, and IEP, to the Ohio Department of Education.

Once the Scholarship is accepted by ODE, you will receive a mailed acceptance letter to sign and return. If you have any questions about how to complete that form, please reach out. Once completed, send a copy to JB at admissions@jbschool.org.

4

Tuition and Aid

Applying your scholarship toward JB tuition.

Autism

The Autism Scholarship for the 23-24 school year is \$32,445. That amount covers Julie Billiard Schools' full tuition of \$32,445.

Families using the Autism Scholarship will not require and should not apply for additional financial aid.

Jon Peterson

The Jon Peterson Scholarship ranges in amounts granted based on Category of Disability. See the chart on page 9. No Jon Peterson Scholarship covers JB's full tuition and there will be an out-of-pocket amount for JP families. However, need-based financial aid is available to reduce the out-of-pocket cost. When a child is accepted at JB, the Admissions Team will share a link to access the online Financial Aid application.

Families should apply for Financial Aid ASAP upon notification of acceptance. See page 11 for more details.

Jon Peterson Special Needs Scholarship Amounts 23-24



FY 2023 Maximum Scholarship Amounts by Category

The chart below evidences the maximum scholarship amount based upon a child's special education category. The child must be enrolled in the scholarship program for the entire school year to receive the full scholarship amount. Parents are responsible for costs exceeding these amounts in addition to services not identified in the Individualized Education Program (IEP).

Julie Billiard Schools' tuition for 2023-2024 is \$32,445/year. Julie Billiard Schools provides additional, need-based financial aid on a first-come basis to families accessing the Jon Peterson Scholarship. Families can apply for the scholarship and aid after being accepted into JBS. A complete financial aid application determines the total family contribution.

	Qualifying Disability (See Section 4 of Evaluation Team Report)	Scholarship Amount	Remaining JB Tuition Financial aid available
1	Speech or Language Impairment	\$8,941	\$23,504
2	Specific Learning Disability, Intellectual Disability, or OHI-minor	\$11,632	\$20,813
3	Hearing Impaired or Emotional Disturbance	\$17,863	\$14,582
4	Vision Impaired or OHI-major	\$21,433	\$11,012
5	Orthopedic Impairment or Multiple Disability	\$26,480	\$5,965
6	Autism, Traumatic Brain Injury, or Hearing and Vision Impaired	\$30,000	\$2,445

WHEN TO APPLY

Families can apply for the Jon Peterson Scholarship after being accepted to Julie Billiard Schools.

ADDITIONAL FINANCIAL AID

Once accepted to JBS, families can apply for additional financial aid at online.factsmgt.com/aid.

QUESTIONS

Contact Julie Billiard Schools' Admissions Office at 216-716-8318 or email admissions@jbschool.org.

Jon Peterson Special Needs Scholarship Amounts 24-25



FY 2024 Maximum Scholarship Amounts by Category

The chart below evidences the maximum scholarship amount based upon a child's special education category. The child must be enrolled in the scholarship program for the entire school year to receive the full scholarship amount. Parents are responsible for costs exceeding these amounts in addition to services not identified in the Individualized Education Program (IEP).

Julie Billiard Schools' tuition for 2024-2025 is \$35,340/year. Julie Billiard Schools provides additional, need-based financial aid on a first-come basis to families accessing the Jon Peterson Scholarship. Families can apply for the scholarship and aid after being accepted into JBS. A complete financial aid application determines the total family contribution.

	Qualifying Disability (See Section 4 of Evaluation Team Report)	Scholarship Amount	Remaining JB Tuition Financial aid available
1	Speech or Language Impairment	\$9,585	\$25,755
2	Specific Learning Disability, Intellectual Disability, or OHI-minor	\$12,470	\$22,870
3	Hearing Impaired or Emotional Disturbance	\$19,150	\$16,190
4	Vision Impaired or OHI-major	\$22,977	\$12,363
5	Orthopedic Impairment or Multiple Disability	\$28,387	\$6,953
6	Autism, Traumatic Brain Injury, or Hearing and Vision Impaired	\$32,445	\$2,895

WHEN TO APPLY

Families can apply for the Jon Peterson Scholarship after being accepted to Julie Billiard Schools.

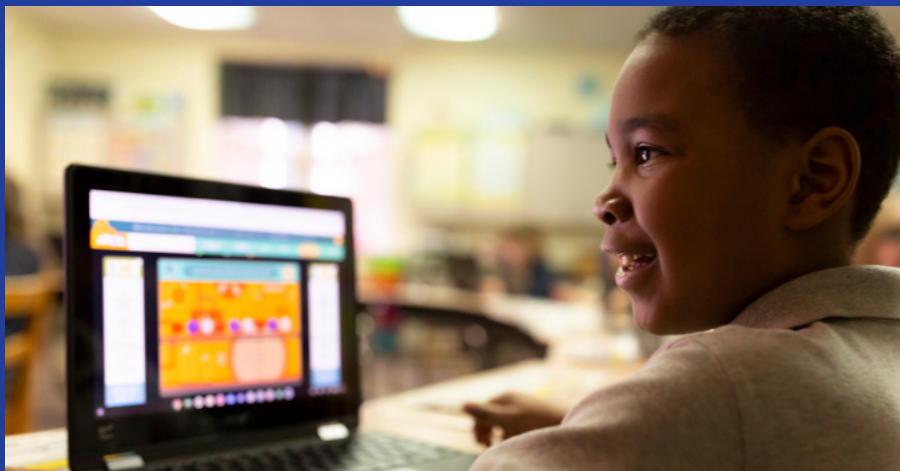
ADDITIONAL FINANCIAL AID

Once accepted to JBS, families can apply for additional financial aid at online.factsmgt.com/aid.

QUESTIONS

Contact Julie Billiard Schools' Admissions Office at 216-716-8318 or email admissions@jbschool.org.

The Ohio Autism Scholarship Program



The Autism Scholarship Program (ASP) gives the parents of children with an educational diagnosis of autism the choice to send the child to a special education program other than the one operated by the school district of residence to receive their education and the services outlined in the child's individualized education program.

All children with a qualifying diagnosis of Autism on their Evaluation Team Report (ETR) qualify for the **Autism Scholarship totaling \$32,445.**



WHEN TO APPLY FOR THE AUTISM SCHOLARSHIP

Families can apply for the Autism Scholarship after being accepted to Julie Billiard Schools. Applications are accepted throughout the year.

QUESTIONS

Contact Julie Billiard Schools' Admissions Office at 216-716-8318 or email admissions@jbschool.org.

Applying for Financial Aid

online.factsmgt.com/aid



At Julie Billiard Schools, we believe that the ability for students to receive the individualized education they need should not be predicated on their parents' financial ability to pay the full \$32,445 tuition. As such, we offer financial aid to assist families in affording a Julie Billiard education for their child. Financial aid is available because of the generosity of donors who believe in our mission and have given to assist families in need.

Julie Billiard Schools is an approved provider for the Jon Peterson Special Needs Scholarship as well as the Autism Scholarship. Any family whose child uses the Jon Peterson Scholarship may apply for financial aid by completing an application which can be accessed via FACTS. Julie Billiard Schools' Financial Aid Committee will review all applications for financial aid and will grant aid based on the needs of the family and the resources available. Financial aid will be granted on a first-come basis.

Additional Financial Aid

All financial aid applications are also reviewed by the Diocese of Cleveland. Financial aid from the Diocese may be available to families if the applicant meets the documented requirements and deadlines of the Diocese. Visit <https://www.dioceseofcleveland.org/offices/formation-education/catholic-schools/financial-aid-amp-scholarships> for additional information.

Families will be required to sign a Family Responsibility Agreement that includes the following statement: "I understand that if I am granted financial aid it may be withdrawn at any time if my payment agreement is not current. I also understand that I may not be eligible to apply for financial aid for re-enrollment of my child for the next school year if my account is not current." Financial Aid applicants are required to report **all** income within the application.

Financial aid decisions are made on an annual basis and recipients must reapply annually. All information supplied by the applicant is considered confidential. Additionally, applicants are prohibited from discussing financial aid awards with other parents or school employees other than the President/CEO or Admissions and Business Office personnel.

QUESTIONS

Contact Julie Billiard Schools' Admissions Office at 216-716-8318 or email admissions@jbschool.org.

Quick Facts

We provide a comprehensive K-8 program that features specialized and personalized attention, small class sizes, highly trained intervention specialists in each classroom, and a whole-child approach to learning. Our core beliefs of respecting differences and building on strengths is vital for students who learn differently.



Location: Julie Billiard Schools has campuses in Akron, Brecksville, Lyndhurst and Westlake. Our students are bright, creative, and curious children coming from 40+ school districts located throughout Cuyahoga, Geauga, Lake, Lorain, Medina, Portage, Summit, and Wayne Counties.



Religion: 40% Catholic, 60% other, including those who attend Jewish, Methodist, Lutheran, Presbyterian, and nondenominational places of worship.



Diversity: Our diverse student body is comprised of many ethnic cultures including African American, Asian, Caucasian, Hispanic, Multiracial, and Native American. Our students come to JB from a variety of socioeconomic backgrounds. JB strives to honor families in all forms.



Types of Diagnoses Served: Our educational model is designed to best meet the academic and social needs of children with learning challenges and those who have been diagnosed with mild to moderate autism, dyslexia, dyscalculia, dysgraphia, ADD/ADHD, expressive language delays, receptive language delays, written expression difficulties, anxiety disorders, and executive function deficits.



Financial Assistance: 100 percent of our students receive some form of tuition assistance in the form of state scholarships or financial aid. Our aim is to serve students who would most benefit from our academic and social programs.

QUESTIONS

Contact Julie Billiard Schools' Admissions Office at 216-716-8318 or email admissions@jbschool.org.

The JB Way

The “JB Way” is our core, our strength, and our reminder that ALL children have the potential to be happy, successful students. It’s the combined qualities, characteristics and attributes, demonstrated by the Notre Dame educators and the charisma of St. Julie Billiard, that set us apart from other learning environments.



Culture

- Our students are loved, accepted and given a sense of belonging.
- We respond to our students with kindness and a complete understanding of how they learn.
- We recognize that each of our students has unique gifts and talents.
- Our students are expected to work to their potential, regardless of their abilities.
- We create relationships and collaborate with our students’ families to ensure continuity, offer support, and build community.

Approach to Learning

- We focus on the whole child and address his or her academic, social, spiritual, and emotional needs.
- Our individualized learning programs are adapted to meet the unique needs of our students, allowing them to become successful learners.
- We foster self-esteem and confidence to reduce fear, build trust, and encourage our students to take academic risks and work beyond their comfort levels.
- We offer onsite therapies to promote creative and engaging solutions that are delivered in a collaborative and consistent manner.

Professionals

- Our staff includes certified Intervention Specialists and therapists who have valuable experience in special education.
- Our staff and faculty consider their roles at Julie Billiard Schools to be a “calling” more than a career.
- All faculty and staff have opportunities to develop professionally in order to best serve our students.
- We make an investment in the educational interests and passions of our staff.
- Professional evaluations help maintain high faculty and staff performance.
- We recruit and retain board members who are committed and dedicated to our mission of empowering and nurturing students with special learning needs.

QUESTIONS

Contact Julie Billiard Schools' Admissions Office at 216-716-8318 or email admissions@jbschool.org.

Frequently Asked Questions

Is the curriculum different from other schools?

Our curriculum includes language arts, mathematics, science, social studies, art, music, physical education, and religion. Julie Billiard Schools are accredited by the Ohio Catholic Schools Accrediting Association (OCSAA) as part of the Catholic Diocese of Cleveland through the State of Ohio and follow the Cleveland Catholic Diocese and Ohio Department of Education course of studies.

Do students need to have an official diagnosis to attend?

Every JB student has an educational diagnosis that qualifies him or her to receive special education services. Diagnoses, and IEPs, are helpful because they communicate common language, issues and needs. Although an official medical or educational diagnosis is not required, scholarship funding is contingent on an IEP.

Will my child's IEP be implemented?

While families give up their Free and Appropriate Public Education through their local school district, JB does provide services that focus on your child's IEP goals. At JB, curriculum is individually designed by intervention specialists and therapists to meet and exceed the goals included in your child's IEP.

What happens if there is not an immediate seat available?

If space is not immediately available at your school of interest, your child will be placed on a waitlist and notified when space becomes available. Though a seat may not be immediately available at your first choice campus, we encourage families to consider all Julie Billiard Schools, as they all offer the same staffing ratios, environments, curriculum, and approach.

Is transportation available?

Julie Billiard Schools do not transport students. However, certain public school districts provide transportation to and from our schools. Contact your home school district transportation department for more information. For families who wish to drive their children to school or coordinate carpool transportation with other families, our drop-off/pick-up procedures are both convenient and safe.

Do students need to be practicing Catholics to attend?

No. Julie Billiard Schools welcome all faith traditions, however, students are expected to participate in religion class, weekly prayer services, and mass when celebrated during the school day.

Do students wear uniforms?

Yes. Official school uniforms can be purchased through our designated vendor. Gently used uniforms are also available at each school during that school's annual Uniform Swap at the beginning of each academic year.

Frequently Asked Questions

What should I do if my child doesn't have a current IEP?

Reach out to your current school district of residence to request a formal evaluation for your child. Even if your child is homeschooled or attends a private school, it is the school district of residence that completes the evaluation and the IEP. If you need further assistance with this, our Directors of Special Education can answer questions.

Are Beforecare and Aftercare Available?

Julie Billiard Schools does not offer Beforecare, though students can be dropped off as early as 7:40 a.m. Aftercare is available from 3 p.m. to 6 p.m. each day for a fee of \$10 per hour, billed by the minute. The second child in the same family is billed at \$9 per hour. Experienced staff members supervise all programs and diligently oversee the safety and well being of each child.

Are there any fees not included in tuition?

An annual academic fee of \$100, the cost of uniforms, lunches, some extracurricular costs, Beyond Camp, and Aftercare are not covered within JB tuition.

What happens at a Screening Activity?

A typical Screening Activity includes a group activity in which students are encouraged to introduce themselves, followed by a social activity. We facilitate a language arts or reading assessment and a writing assignment, followed by a mini recess, then a math activity or assessment. We observe a student's fine motor skills, problem solving abilities, coping strategies, self advocacy, work stamina, and work ethic. We also love to see how they interact with their peers, answer questions, transition between activities, and follow directions.

Is there a deadline to apply?

No. Julie Billiard Schools offers rolling admissions, which means we can accept a student at any point in the school year if space is available. Tuition is prorated to the time of enrollment. Some campuses have a waitlist for certain grades. We encourage you to apply as soon as you're ready so that we can begin to process your application. Applications are reviewed in the order in which they're received.

Can my child be re-screened if JB determines they can't meet his/her needs?

We know that children can experience tremendous growth from year to year. We can re-screen one year from the date that your child was first screened if you think that your child may be ready.

Notice of Non-Discrimination

Julie Billiard Schools welcomes students, staff, and board members of all ages, races, colors, religions, nationalities, genders, sexual orientation, gender identity, handicap, national or ethnic origins to all the rights, privileges, programs and activities made available at the Schools. Julie Billiard Schools does not discriminate in administration of its education or admission policies, hiring practices, tuition assistance or other school administered programs.

Understanding the IEP & ETR



ETR

Evaluation Team Report

Comes before the IEP

- ✓ Parent/guardian requests full evaluation from school of residence to determine child's eligibility for special education and related services. (Evaluation must take place within 60 days of consent to evaluate).
- ✓ An Evaluation Team Report (ETR) is created by the evaluation team and is a summary of the findings from an initial evaluation or a reevaluation.
- ✓ At the end of the ETR meeting, the team determines whether or not the child qualifies for special education. If yes, eligibility in one of IDEA's 13 disability categories is listed.
- ✓ If your child qualifies for services, a meeting will be scheduled within 30 days so that the team can create an IEP for the child to address the needs identified by the ETR.
- ✓ A reevaluation of the ETR takes place every 3 years or sooner (if the child is transitioning from preschool to school-age services, or when a change in disability category is to be made.)

IEP

Individualized Education Program

Driven by the ETR

- ✓ Within 30 days of the ETR's completion, the IEP team develops a written document called the IEP, which is designed to meet the unique educational needs of a student with disabilities as identified in the ETR.
- ✓ The IEP serves as a program that outlines the child's current strengths, needs, present levels, goals, and services.
- ✓ Parent/guardian input is gathered when creating the IEP. Other IEP team members include Intervention Specialists, general education teacher(s) and therapist(s).
- ✓ Intervention specialists within the child's public school district of residence are required to write, present, and finalize an IEP annually for every student who qualifies.
- ✓ Note: If your child currently has an IEP, then he or she also has an ETR. If you need a copy of either document, reach out to your school district of residence to request one. Both the IEP and ETR must be made available to the parent/guardian.